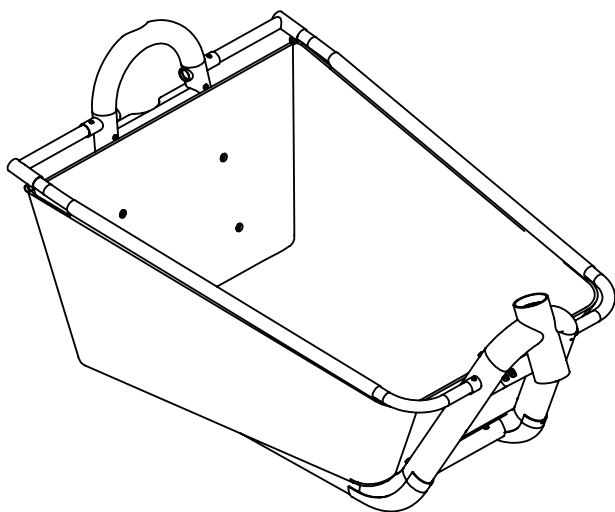


Open Loader

Soft Open Top Cargo Box for Supermarché



yuba[®]
what a bicycle can do!

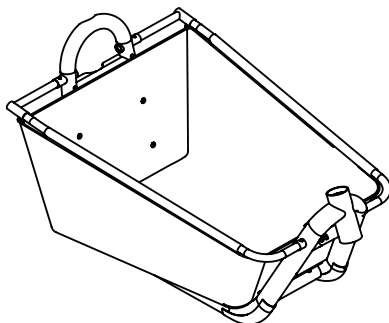
Open Loader

Soft Open Top Cargo Box for Supermarché



Contents

- (1) Open Loader Liner
- (2) Male Sideloader bars
- (1) Left Female Sideloader bar
- (1) Right Female Sideloader bar
- (2) M6 Bolts



Compatibility

Supermarché

Instructions

1. Insert male Sideloader bar into Soft Box loops as seen in Figure 1.

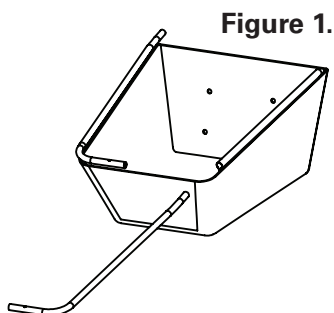


Figure 1.

2. Slide the female Sideloader bars sections over male Sideloader bars as shown in Figure 2.

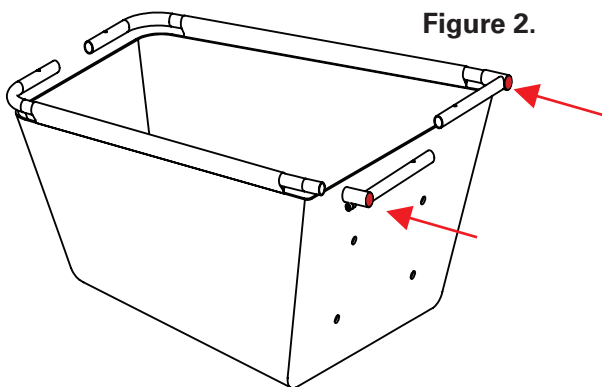
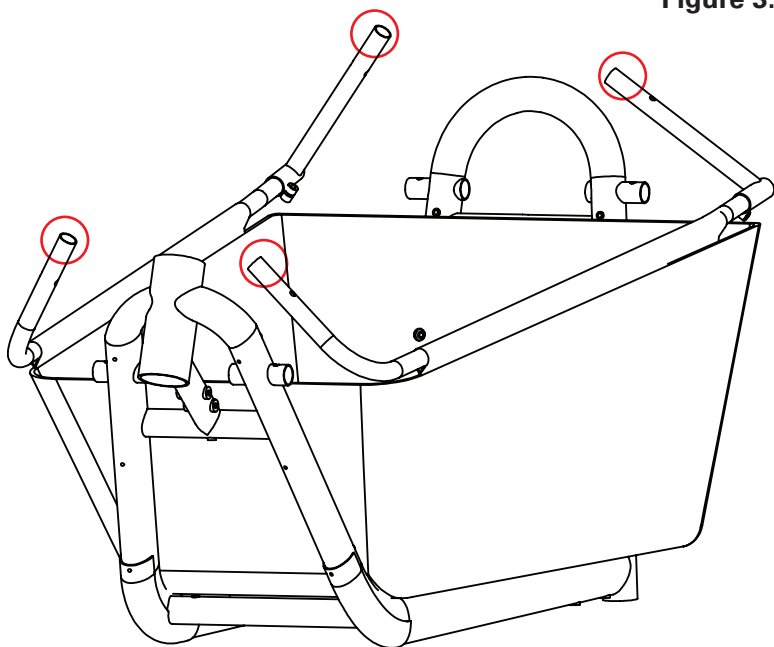


Figure 2.

WARNING! Do not ride without Sideloader bar end plugs installed.

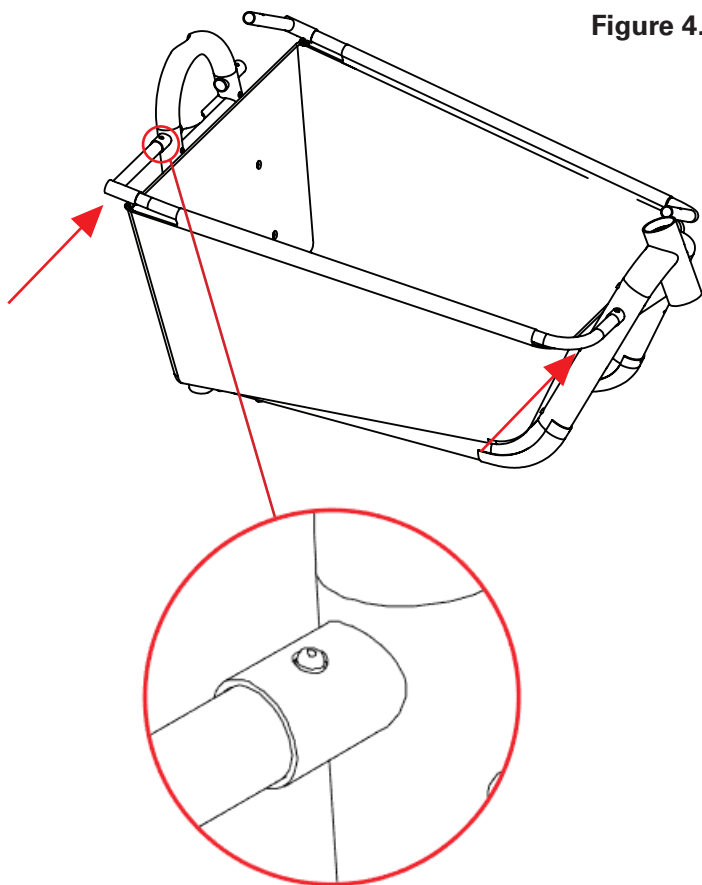
3. Apply bicycle grease to ends of side rails as shown in the circled sections of Figure 3.

Figure 3.



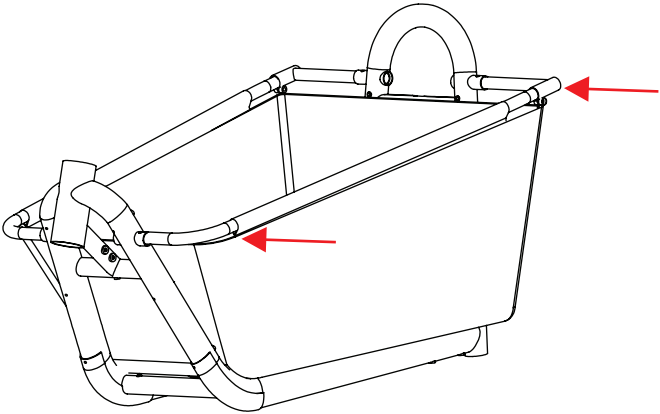
4. With snap buttons facing up, insert Sideloaders into mounting points in frame, until snap buttons index into the corresponding holes.

Figure 4.



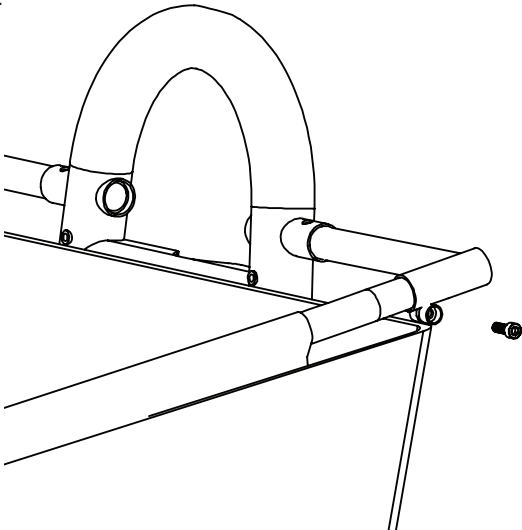
5. Repeat Step 3 with remaining Sideloaders.

Figure 5.



6. Insert and tighten M6 screws into both female Sideloaders.

Figure 6.



Open Loader

Soft Open Top Cargo Box for Supermarché



Warnings and Safety Precautions

General warnings

- **WARNING!** Failure to comply with these instructions may lead to serious injury or death.
- **WARNING!** Riding with additional cargo or an additional passenger may alter the riding characteristics of your bicycle, decrease stability, and increase braking distances.
- **WARNING!** Never leave a child unattended on a bicycle.
- **WARNING!** Do not use with children who are too small or cannot balance/support their own weight independently.
- Do not allow passengers body, clothing, shoe laces or other personal items to come in contact with moving parts of the bicycle.
- Passenger should remain seated while bicycle is in motion.
- Ensure passenger is wearing an approved bicycle helmet.
- Never ride in inclement or hazardous situations.
- Ensure a rear reflector is installed and visible when a passenger is aboard.
- Never ride a bicycle at night without adequate lighting.
- Presence of an additional passenger may require alteration of the method used by the rider to mount or dismount the bicycle. Care must be taken whenever the rider gets on or off the bicycle.

Specific hardware and component warnings

- **WARNING!** Never ride without an approved child seat.
- **WARNING!** Overloading may cause failure.
- **WARNING!** Regularly check welds, tubing and bolts for loosening, signs of distress, and general wear and tear. If bolts or threads show signs of distress, order replacement parts immediately. Do not use if parts are cracked or damaged.
- **WARNING!** Regularly check Sideloaders for bends or dents, and replace if damaged.

For questions or support please contact your local Yuba Bicycles dealer or email info@yubabikes.com.